

QUICKFLASH

READY-MADE FLASHINGS



The Most Comprehensive Wall Flashing System



Details and Downloads available from:

www.quickflash.co.nz

TASMAN CONTRACTING LTD

15 CARLYON ROAD, RD 1 UPPER MOUTERE, NELSON 7173

PH: 03 543 2145 FAX: 03 543 2146 EMAIL: INFO@QUICKFLASH.CO.NZ

QUICKFLASH

ALUMINIUM

(0.7mm 5000 series)

STAINLESS STEEL

(0.5mm 304)

COLORSTEEL MAXX

(0.55mm) (Colour Thunder Grey only)

GALVANISED STEEL

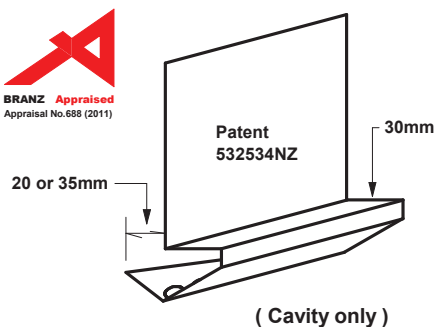
(0.55mm Z450)

Flashings are available in :

All flashings come in 3.0m lengths with the exception of joiners and saddle flashings



BRANZ Appraised
Appraisal No.688 (2011)



Base and Cavity Closure Flashing

Code 01 (Stucco 20mm Cavity)

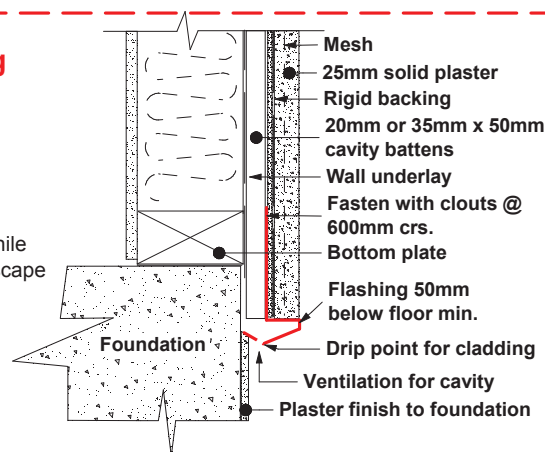
Code 10 (Stucco 35mm Cavity)

This flashing forms a rigid straight base for the solid plaster to finish to. It also vermin proofs the cavity while still allowing for air movement and any moisture to escape by means of 5mm Dia. holes along the underside.

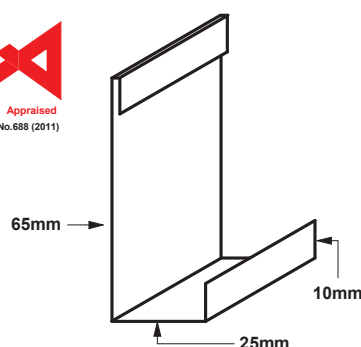
(External joiners available Code 15 & 16)

(End caps available Code 44 & 45)

AVAILABLE IN : **Z450 Galv, Colorsteel Maxx & Stainless Steel.**



BRANZ Appraised
Appraisal No.688 (2011)



Edge Flashing

Code 02

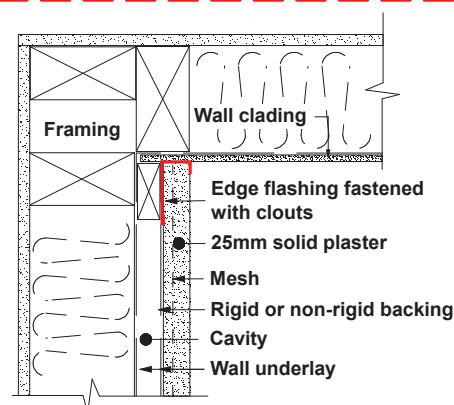
This flashing forms a clean edge where solid plaster meets another form of cladding.

(Note:- Stucco & Aluminium are not compatible.)

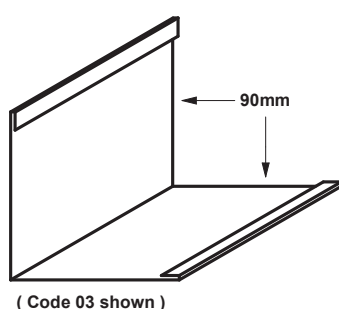
Aluminium may be used with other claddings

(Direct fix or Cavity)

AVAILABLE IN : **Z450 Galv, Colorsteel Maxx, Aluminium & Stainless Steel.**



BRANZ Appraised
Appraisal No.688 (2011)



Internal Corner Flashing

Code 03 (90x90mm)

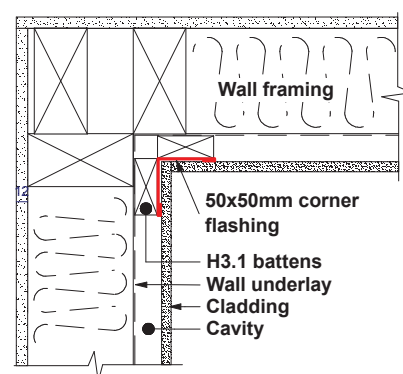
Code 13 (50x50mm)

Code 40 (70x110mm offset)

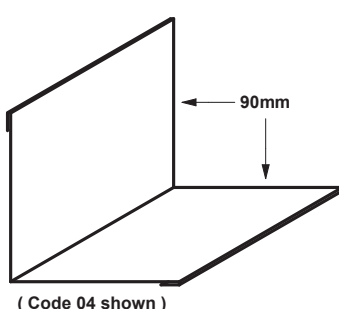
This flashing goes directly behind the cladding to provide extra protection at an internal corner.

(Direct fix or Cavity)

AVAILABLE IN : **Z450 Galv, Colorsteel Maxx, Aluminium & Stainless Steel.**



BRANZ Appraised
Appraisal No.688 (2011)



External Corner Flashing

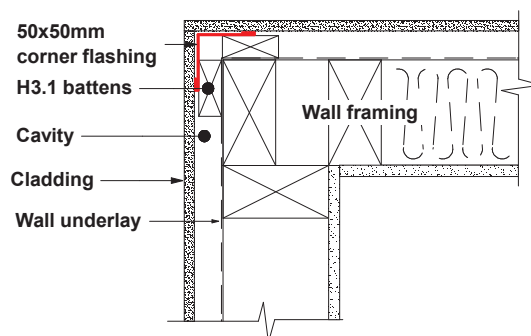
Code 04 (90x90mm)

Code 14 (50x50mm)

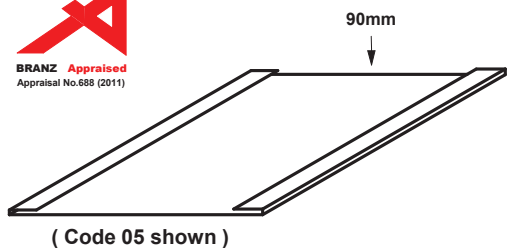
This flashing goes directly behind the cladding to provide extra protection at an external corner.

(Direct fix or Cavity)

AVAILABLE IN : **Z450 Galv, Colorsteel Maxx, Aluminium & Stainless Steel.**



Vertical Control Joint Back Flashing



Code 05 (90mm)

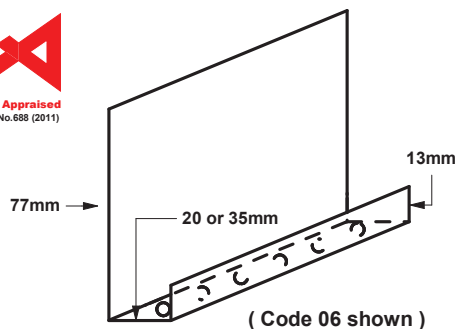
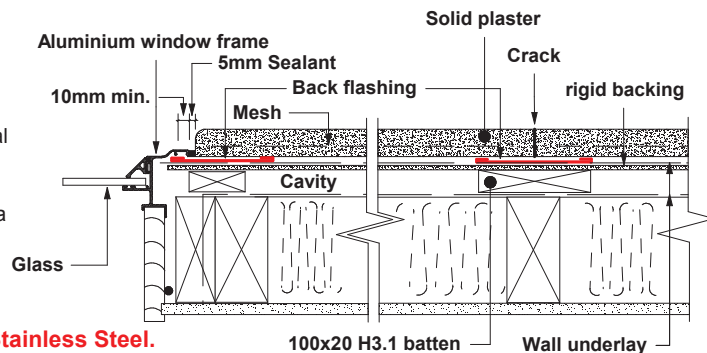
Code 41 (130mm)

This flashing goes behind vertical control joints to prevent moisture getting back into the cavity or framing. It can also be used as a window jamb flashing.

(Direct fix or Cavity)

AVAILABLE IN :

Z450 Galv, Colorsteel Maxx, Aluminium & Stainless Steel.



Cavity Closure Flashing

Code 06 (20mm Cavity)

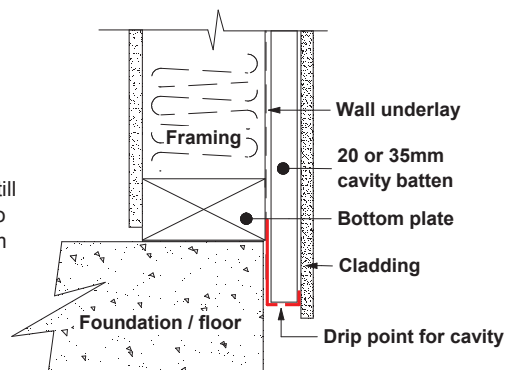
Code 11 (35mm Cavity)

This flashing vermin proofs the cavity while still allowing for air movement and any moisture to escape by means of 5mm Dia. holes @ 15mm Crs. Can be used with most claddings.

(Cavity only)

AVAILABLE IN :

Z450 Galv, Colorsteel Maxx, Aluminium & Stainless Steel.

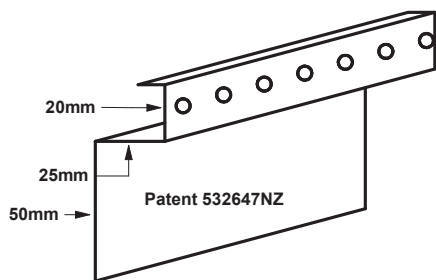


Vented Cavity Top Flashing

Code 07

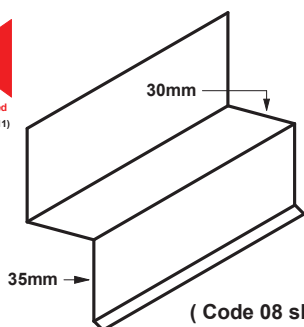
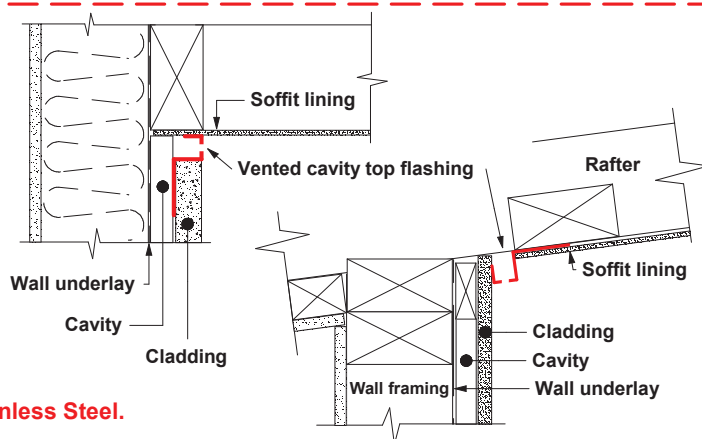
This flashing ventilates the top of the cavity while restricting water entry. It also gives a clean straight finish to stucco cladding. It can also be used to ventilate the soffit area or under an enclosed deck.

(Cavity only)



AVAILABLE IN :

Z450 Galv, Colorsteel Maxx, Aluminium & Stainless Steel.



Horizontal Control Joint Flashing

Code 08 (30mm cladding or cavity + 10mm cladding)

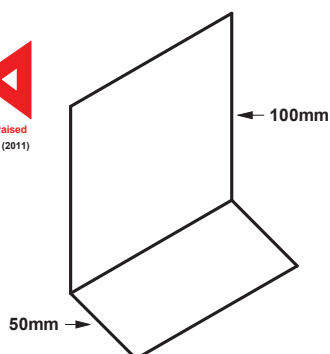
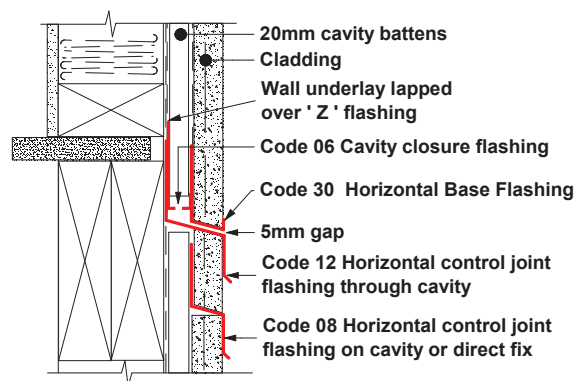
Code 12 (50mm cladding or cavity + 30mm cladding)

This flashing is used to form horizontal breaks in claddings either with cavities or direct fix

(Direct fix or Cavity)

AVAILABLE IN :

Z450 Galv, Colorsteel Maxx, Aluminium & Stainless Steel.



Brick Sill Flashing

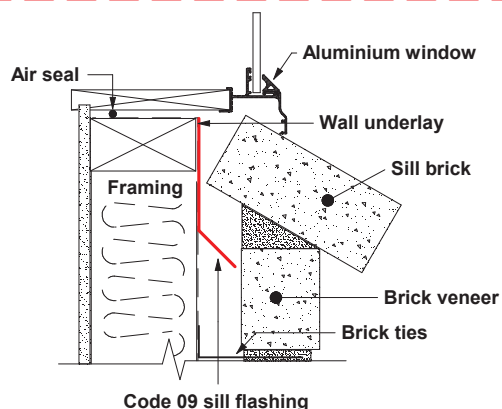
Code 09

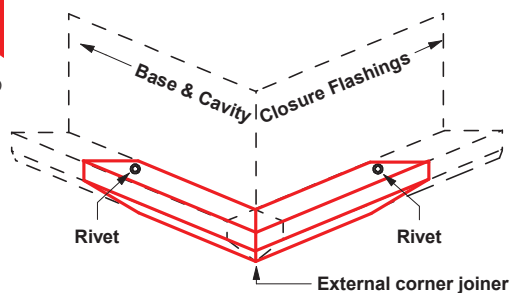
This flashing directs any water away from the dry side of the cavity towards the back of the brick veneer.

(Cavity only)

AVAILABLE IN :

Z450 Galv, Colorsteel Maxx & Stainless Steel.





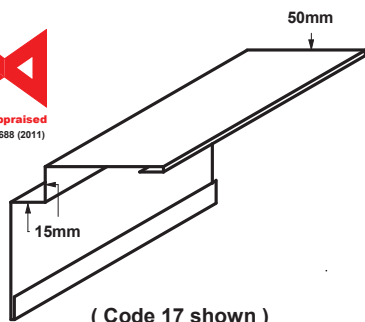
Base and Cavity Joiner

Code 15 (for code 01)

Code 16 (for code 10)

External corner joiners for Codes 01 & 10 which slide over the base flashings, then pop riveted into place.

AVAILABLE IN : **Z450 Galv, Colorsteel Maxx & Stainless Steel.**



(Code 17 shown)

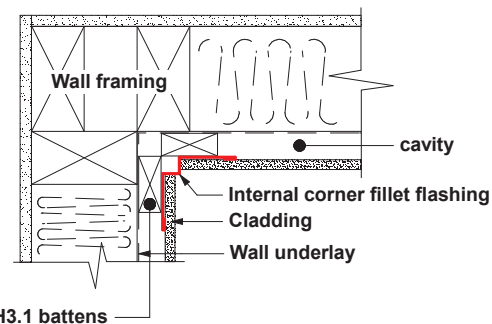
Internal Corner Fillet Flashing

Code 17 (up to 15mm cladding)

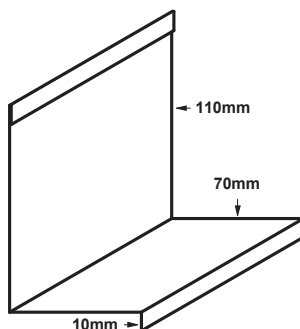
Code 18 (up to 40mm cladding)

This flashing goes directly behind the cladding to provide extra protection at an internal corner while providing a straight face for the cladding to finish to.

(Direct fix or Cavity)



AVAILABLE IN : **Z450 Galv, Colorsteel Maxx, Aluminium & Stainless Steel.**

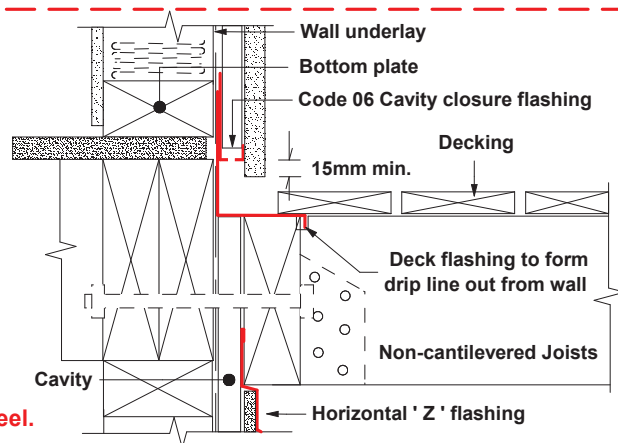


Deck Flashing

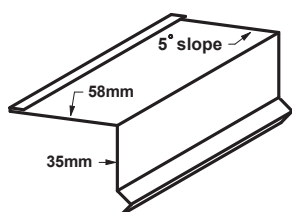
Code 19

This flashing protects the stringer joist fastened to, or along the side of the building, forcing water to drip away from the joist.

(Direct fix or Cavity)



AVAILABLE IN : **Z450 Galv, Colorsteel Maxx, Aluminium & Stainless Steel.**



Sill Flashings

Code 23

(Aluminium window 5 degree fall)

This flashing has a 5 degree slope and a hem to the back edge. Both ends require a 20mm turn up to be folded on site.

(Direct fix)

Sill flashing to back of window frame with 20mm minimum upstand to both ends.

Chamfer trimmer plate as required with wall underlay and flashing tape over

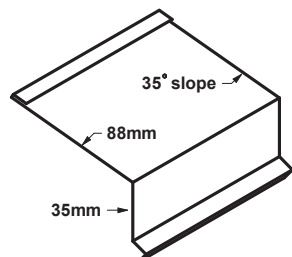
Sill flashing with 5 degree minimum fall

10mm minimum joinery cover to flashing

5mm gap without seal

35mm cover to cladding

Cladding

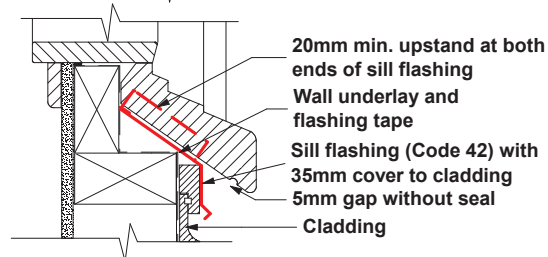


Code 42

(Timber window 35 degree fall)

This flashing has a 35 degree slope and a hem to the back edge. Both ends require a 20mm turn up to be folded on site. We can change this angle on request if necessary.

(Direct fix)



Sill flashing to extend behind aluminium extrusion with an 8mm upstand to back and tapered turn ups to both ends

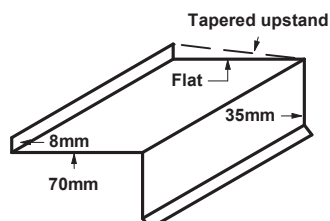
Frame block

8mm min. cover to joinery

35mm min. cover to cladding

5mm gap without seal

Cladding



Code 52

(Aluminium window Flat)

This flashing sits flat on the trimmer with an 8mm upstand to the back edge. Both ends require a 8mm tapered turn up to be folded on site.

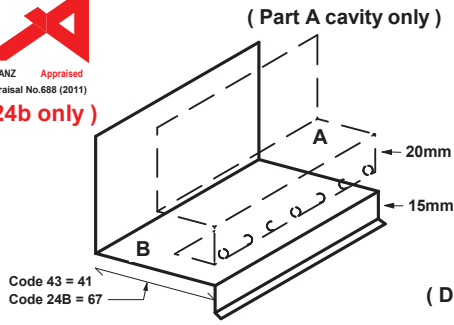
(Direct fix)

AVAILABLE IN : **Z450 Galv, Colorsteel Maxx, Aluminium & Stainless Steel.**

Two Piece Window Head Cavity Closure Flashing



(24b only)



AVAILABLE IN :

Z450 Galv, Colorsteel Maxx, Aluminium & Stainless Steel.

Code 24 A (Cavity closure)

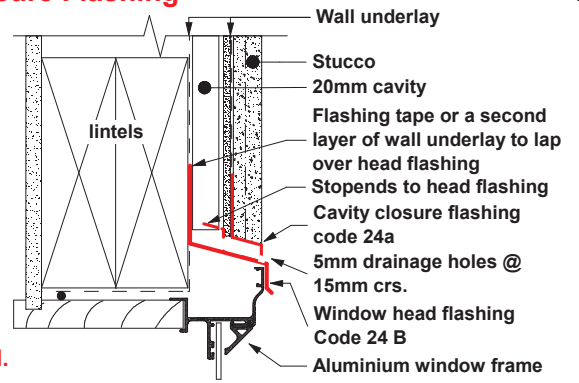
Part 'A' can also be used with Code 12 as a Horizontal Control Joint Flashing.

Code 24 B (Head flashing 65mm)

Part 'B' is designed to work in with Code 31 (Window Side Flashing)

Code 43 (Head flashing 40mm)

(Direct fix or Cavity)



External Corner Face Flashing

Code 25

5mm fixing holes @ 300mm crs each side.

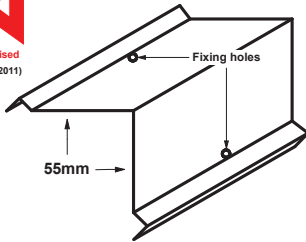
135 degree external corner available on request

Use 8 gauge stainless steel screws with neoprene washers

(Direct fix or Cavity)

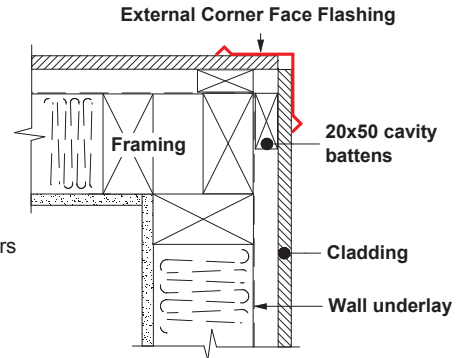


(24b only)



AVAILABLE IN :

Z450 Galv, Colorsteel Maxx, Aluminium & Stainless Steel.



Internal Corner Face Flashing

Code 26

5mm fixing holes @ 300mm crs each side.

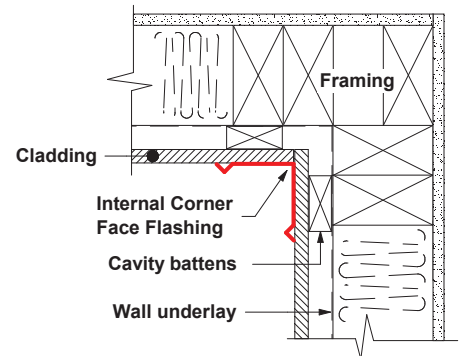
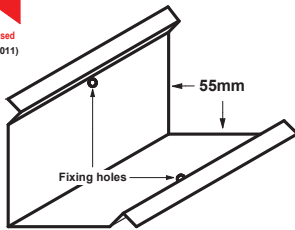
135 degree internal corner available on request

Use 8 gauge stainless steel screws with neoprene washers

(Direct fix or Cavity)



(24b only)



AVAILABLE IN :

Z450 Galv, Colorsteel Maxx, Aluminium & Stainless Steel.

Horizontal 'Z' Flashing

Code 27 (6mm cladding)

Code 28 (7.5mm cladding)

Code 29 (10mm cladding)

Code 20 (12mm cladding)

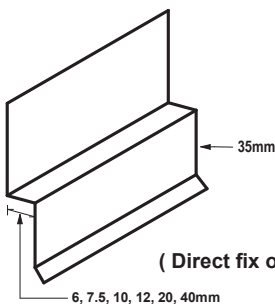
Code 21 (20mm cladding)

Code 22 (40mm cladding)

(Direct fix or Cavity)

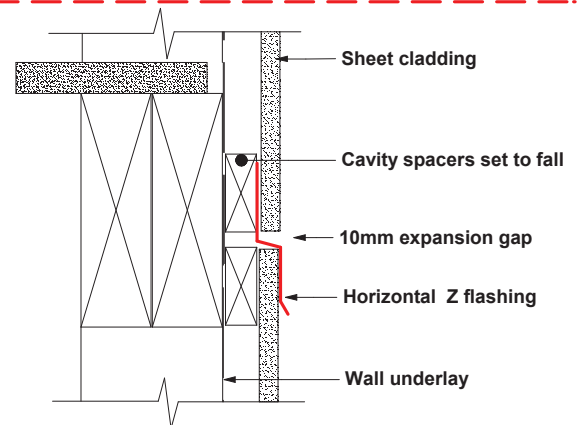


(24b only)



AVAILABLE IN :

Z450 Galv, Colorsteel Maxx, Aluminium & Stainless Steel.



Horizontal Base Flashing

Code 30

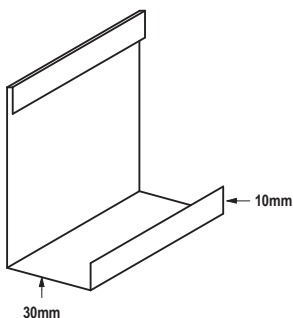
This flashing provides a straight rigid base for solid plaster and other claddings. It can be used with a window head flashing or as a base flashing.

(Note:- Stucco & Aluminium are not compatible.)
Aluminium may be used with other claddings

(Direct fix or Cavity)

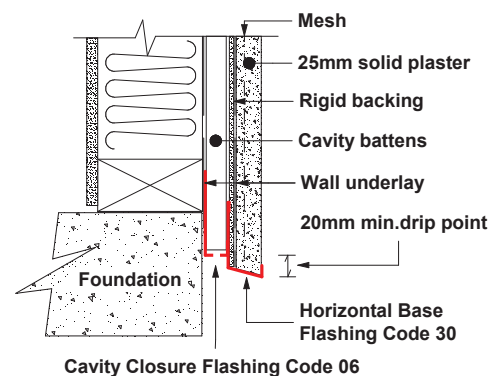


(24b only)



AVAILABLE IN :

Z450 Galv, Colorsteel Maxx, Aluminium & Stainless Steel.



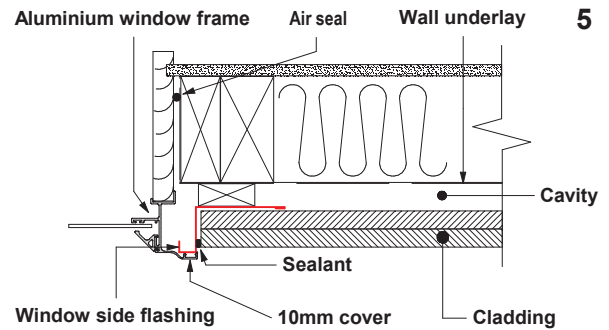
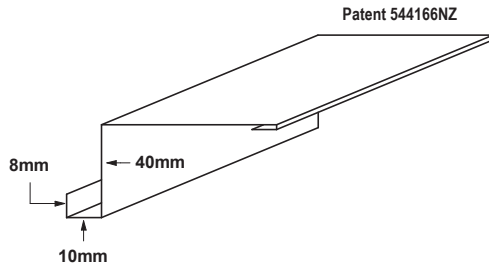
Cavity Closure Flashing Code 06

Window Side Flashing

Code 31

Window side flashing can be used with solid plaster and most other claddings. It is designed to work in with Code 24 part 'B' (window Head Flashing)

(Direct fix or Cavity)



AVAILABLE IN : Z450 Galv, Colorsteel Maxx, Aluminium & Stainless Steel.

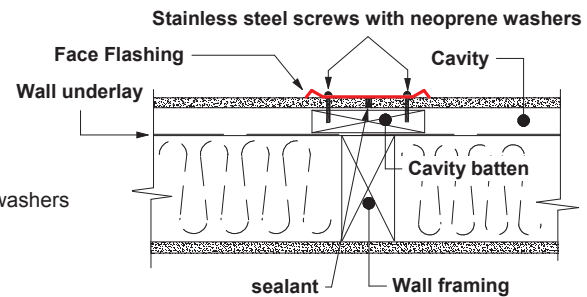
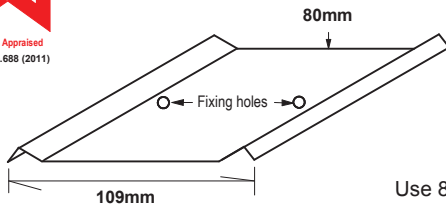
Vertical Control Joint Face Flashing

Code 32

This face flashing goes over a vertical join in the cladding .

Use 8 gauge stainless steel screws with neoprene washers

(Direct fix or Cavity)



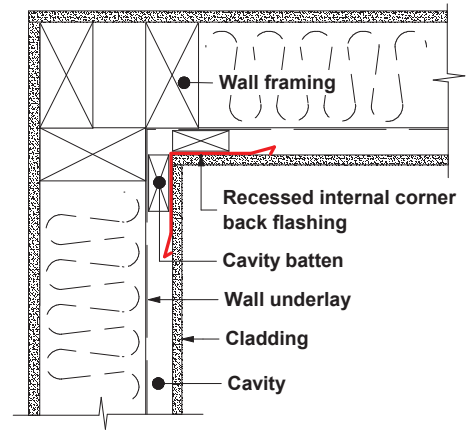
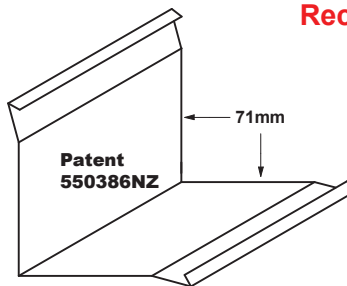
AVAILABLE IN : Z450 Galv, Colorsteel Maxx, Aluminium & Stainless Steel.

Recessed Internal Corner Back Flashing

Code 33

This internal corner flashing goes directly behind the cladding in a cavity situation, without encroaching into the cladding space.

(Cavity only)



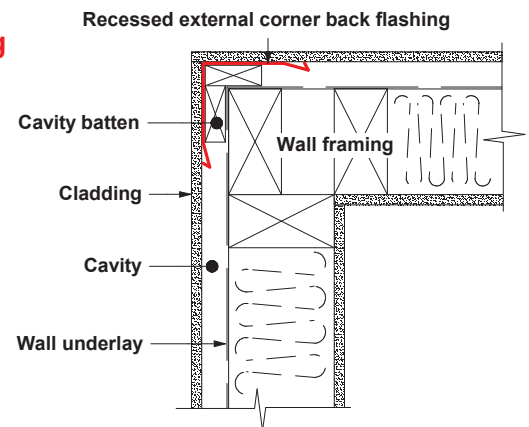
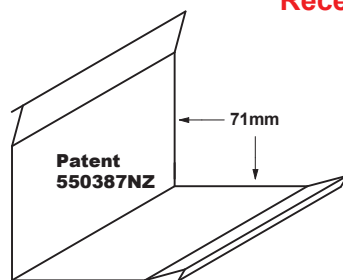
AVAILABLE IN : Z450 Galv, Colorsteel Maxx, Aluminium & Stainless Steel.

Recessed External Corner Back Flashing

Code 34

This external corner flashing goes directly behind the cladding in a cavity situation, without encroaching into the cladding space.

(Cavity only)



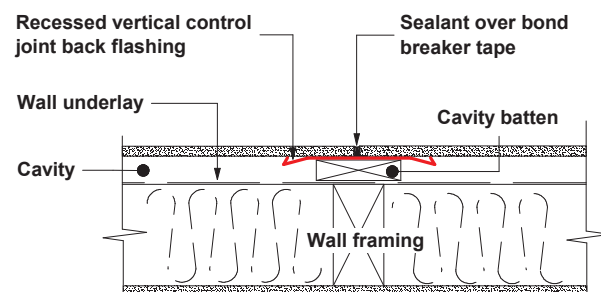
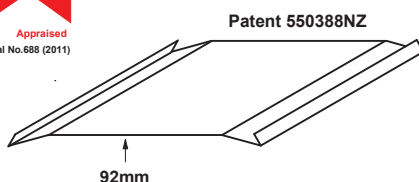
AVAILABLE IN : Z450 Galv, Colorsteel Maxx, Aluminium & Stainless Steel.

Recessed Vertical Control Joint Back Flashing

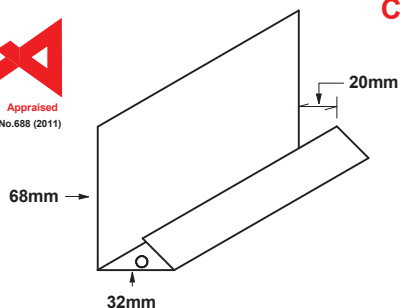
Code 35

This vertical control joint flashing goes behind the cladding in a cavity situation without encroaching into the cladding space.

(Cavity only)



AVAILABLE IN : Z450 Galv, Colorsteel Maxx, Aluminium & Stainless Steel.

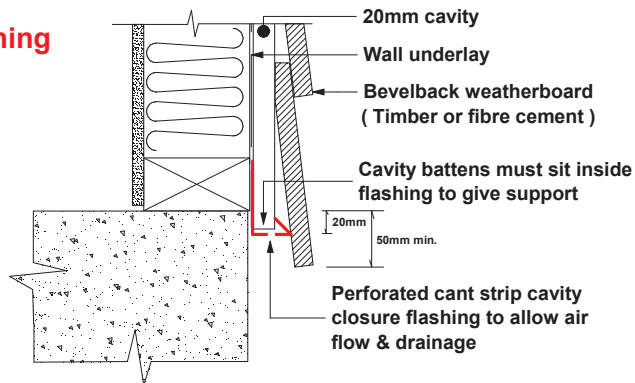


Cant Strip Cavity Closure Flashing

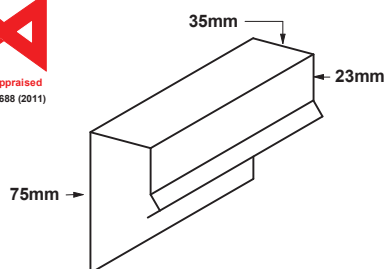
Code 36

This flashing does two jobs. It vermin proofs the cavity while still allowing for drainage and air movement. It also forms a cant strip to support the bottom bevelback weatherboard.

(Cavity only)



AVAILABLE IN : Z450 Galv, Colorsteel Maxx, Aluminium & Stainless Steel.

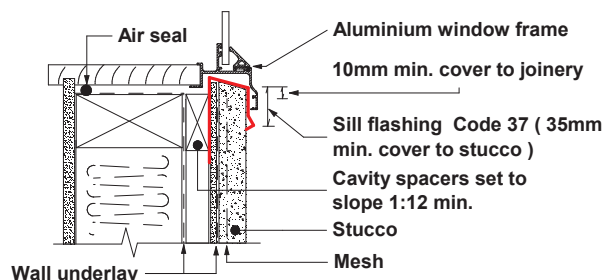


Solid Plaster Cap Flashing

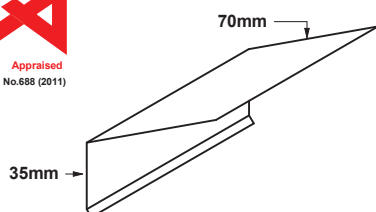
Code 37

Code 37 is used to give 35mm cover to the top edge of solid plaster where the window profile fails to do this.

(Direct fix or Cavity)



AVAILABLE IN : Z450 Galv, Colorsteel Maxx & Stainless Steel.



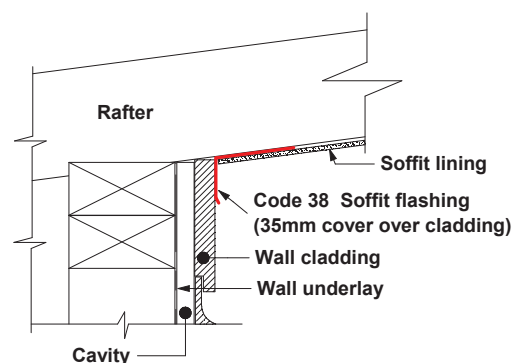
Soffit Wall Junction Flashing

Code 38

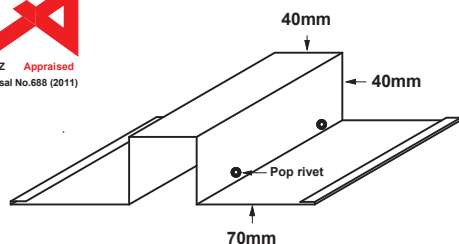
This flashing diverts any moisture from entering the top of the wall space. It is usually installed after the cladding but before the soffit lining and can be used with most types of claddings.

Other angles available on request.

(Direct fix or Cavity)



AVAILABLE IN : Z450 Galv, Colorsteel Maxx, Aluminium & Stainless Steel.



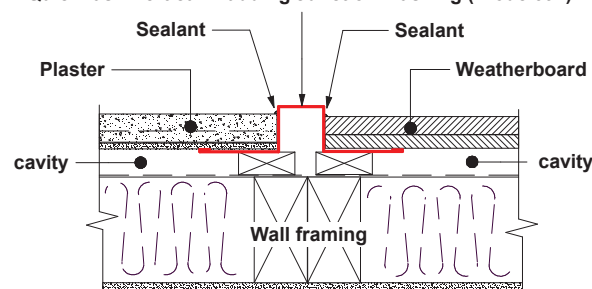
Vertical Cladding Junction Flashing

Code 39

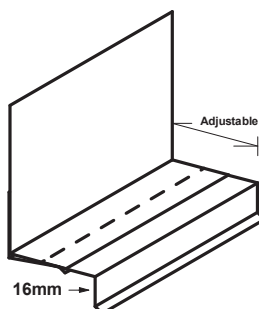
This flashing can be used with a variety of cladding. It forms a clean straight junction between two different types of cladding material without the need for scribes.

(Direct fix or Cavity)

Quickflash Vertical Cladding Junction Flashing (Code 39)



AVAILABLE IN : Z450 Galv, Colorsteel Maxx, Aluminium & Stainless Steel.



Adjustable Head Flashing

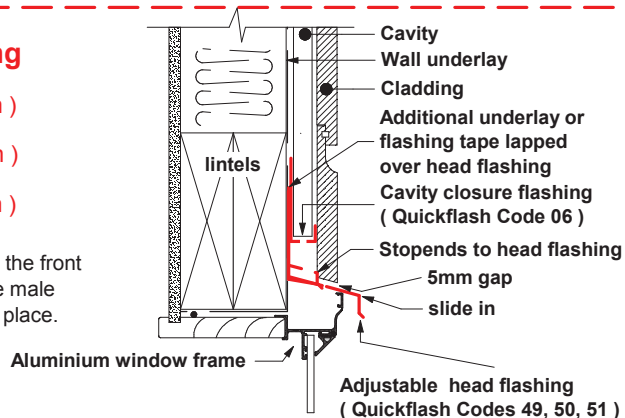
Code 49 (covers 20 / 30mm)

Code 50 (covers 30 / 50mm)

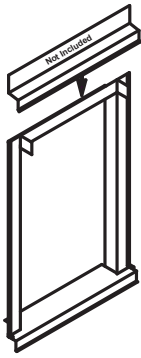
Code 51 (covers 50 / 85mm)

A bead of MS. sealant should be run along the front edge of the female part before inserting the male part. This is to ensure the two parts stay in place.

(Direct fix or Cavity)



AVAILABLE IN : Aluminium.



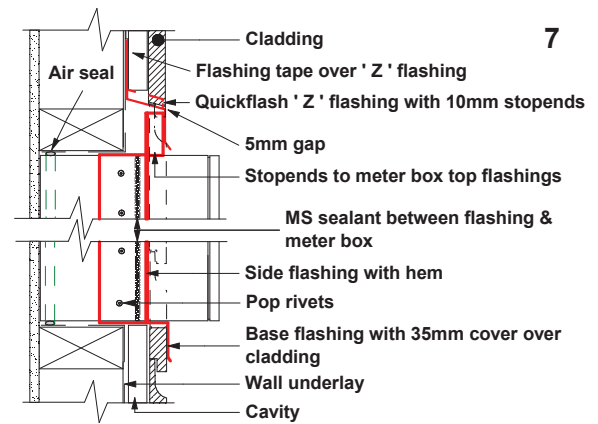
Meter Box Flashing Kit

Code 100

Meter box kits suit rectangular metal meter boxes that range in size up to 600mm wide by 700mm high. Kits will suit most cladding types whether direct fix, 20mm cavity or 40mm cavity. Installation instructions are included with the kit together with pop rivets and a drill bit to suit. Note: head flashing is not included as it must suit the width of the cladding and cavity if applicable.

(Direct fix or Cavity)

AVAILABLE IN : **Z450 Galv with Colorsteel Maxx sill, Aluminium & Stainless Steel.**



Saddle Flashings

Code 101 (150x50 Joists)

Code 102 (200x50 Joists)

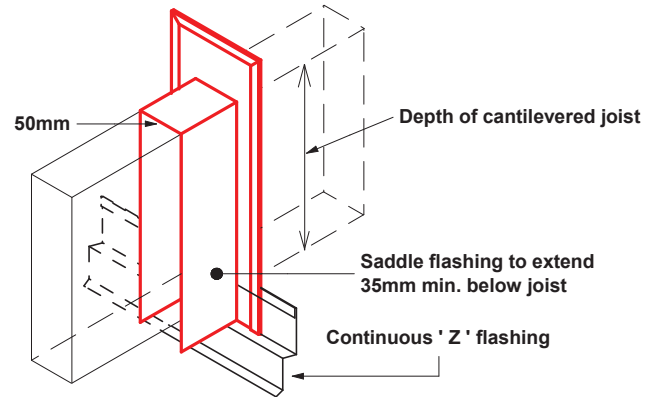
Code 103 (250x50 Joists)

Code 104 (300x50 Joists) (Direct fix or Cavity)

Code 105 (Double 200x50 Joists)

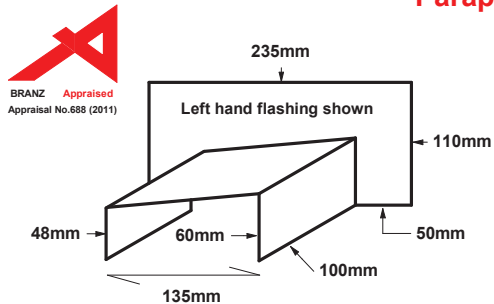
Code 106 (Double 300x50 Joists)

(Other sizes available on request)



AVAILABLE IN : **Stainless Steel.**

Parapet or Balustrade Saddle Flashings

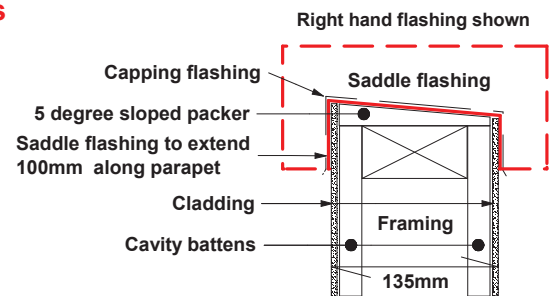


Code 107 (Left Hand)

Code 108 (Right Hand)

(Direct fix or Cavity)

(Other sizes available on request)

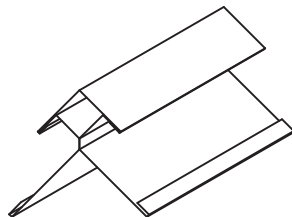


(Building wrap etc. omitted for clarity)

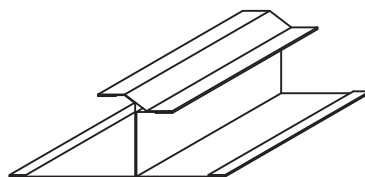
AVAILABLE IN : **Stainless Steel.**

Aluminium Box Flashings

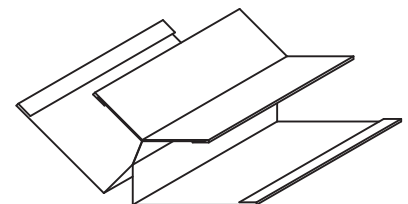
Aluminium Box flashings can be made to order in a range of shapes and sizes to suite some off those awkward situations.



External Box Corner



Cladding Change Box Flashing



Internal Box Corner

AVAILABLE IN : **Aluminium**



BRANZ appraisal No.688 (2011) covers the flashings showing the logo. These flashings have been appraised to see if they meet the flashing requirements of E2/AS1.

For selection of the appropriate flashing material refer to E2/AS1 - Tables 20 , 21 and 22

Aluminium and Galvanised steel must not come in contact with CCA, Copper azole or Copper quaternary salt treated timber in any of NZ exposure zones. Colorsteel Maxx and power coated Aluminium must not come in contact in exposure zones D or sea spray. A layer of bitumen-impregnated paper based heavy-duty roof underlay between the treated timber and metal flashing will minimise any adverse reaction. Stainless steel may come in contact in all exposure zones.